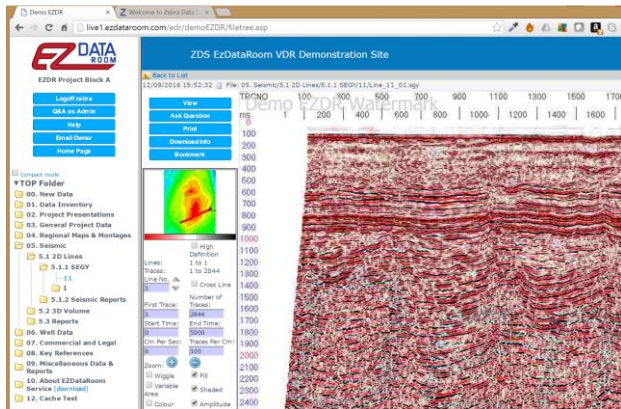
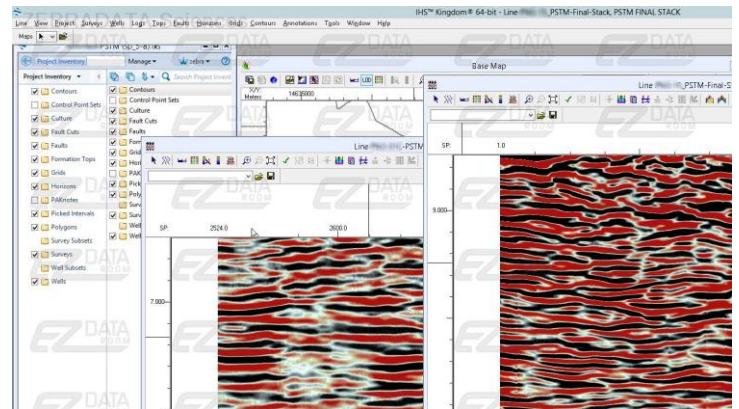


# VDR Platform Comparison



## Geotechnical Virtual Data Room Featuring:

- Multiple access for concurrent users to allow working groups to review potential blocks
- Easy access - via a Web Browser
- No time limit
- No requirement for any specific software or hardware
- Access to viewing only of documents as well as G&G data
- Limited manipulation of view
- Direct file download possible if permission granted by data owner
- Printing of viewed pages possible (if permitted)
- Multi-access data conference facilities available (for remote "show and tell")
- Comprehensive usage statistics available online
- Q&A access with context information



## Workstation Virtual Data Room Featuring:

- Single user access allowing for a more focused review and in-depth interpretation
- Easy access - via Remote Desktop
- Scheduled time slot
- Workstation software and licence not required by user
- Access to full workstation functionality
- Full manipulation of view
- Data always stays on server. Work results and un-watermarked screen dumps can be released with data owners approval
- No printing available
- Multi-way concurrent desktop access available (for remote "show and tell")
- Access statistics available
- Access to Q&A system available